



The Cannon Beach Academy Annual Report
September 2021-June 2022

Table of Contents

	Page
1. Overview	
• Mission statement, vision	3
• History of School	3
• Letter from the director	4
• School Calendar	5
2. Student Information	
• Enrollment	5
• Student Demographics	6
• Attendance	6
• Student Discipline Data	6
• Student Clubs	6
• Academic Achievement/measures	7
○ Statewide assessment scores	7
○ Star 360 assessment results	8
○ ELD/ELPA assessment results	10
○ Analysis of assessments	7-11
3. Personnel	
• Employees	11
• Demographics	11
• Organizational Chart	12
• Professional Development/Evaluations	12
• Board of Directors	13
4. Curriculum/Programs	
• Education Program Descriptions	14
5. Parent/Community Engagement	
• Survey	15
• Engagement-Community/Business Partners	17
6. Facilities	
• Overview	18
• Permits	18
• Insurance	18
• Capital Improvements	18
7. Financial Management	
• Audit	18
• Financial Report	19-23
• Federal Funds	23
8. Local School District	
• Contacts	24
• Professional Development with SSD	24

1 OVERVIEW

The Cannon Beach Academy Vision

It is our vision to create and operate a school that will provide our children the skill, knowledge and compassion they will need to succeed in life.

The Cannon Beach Academy Mission Statement

Our mission is to provide expanded high quality educational choices within the public school system. The Cannon Beach Academy shall strive to provide:

- a balanced education to nurture the development of the whole child, encouraging each child to become a life-long learner and a benefit to society. The school places equal emphasis on a solid academic foundation, artistic expression, attention to the inner emotional life of each child, social development and responsibility, cultural diversity, a healthy lifestyle and appreciation of the environment and the arts.
- a focus on children who have been historically underserved, due to factors such as race, ethnicity, culture and socioeconomic background.
- opportunities for parents and members of the community to be directly involved in the school operation and make significant contributions to their children's educational environment.

History of the School

Our school was born out of a true “grassroots” movement that began in 2011 when the Cannon Beach City Council voiced concerns over the existing Cannon Beach Elementary School’s location, which was in the tsunami inundation zone. A task force of ten members was formed with the intent of finding a new location for the elementary school. These volunteers worked diligently over the next eighteen months, identified a new location for the school and were in negotiations with the Seaside School District (SSD) for a plan to move the district school to this new site. However, in May of 2013, the SSD school board voted to close the Cannon Beach Elementary School due to budget constraints. After this announcement, parents and community members joined together to form The Cannon Beach Academy to help keep a school in our community. We opened our doors, as a K-2 school, with 22 students in September, 2017. We have grown over the past five years and now we serve 47 students in grades K-5. This has all been made possible because of the hundreds of volunteers, donors and community members who support our school.

Letter from the Director

Hello Seaside School District,

Thank you for being our sponsoring district. This is my first year in the position of Director. Originally Interim Director and then in January of 2022 I was made Director by our Board. Our former director took on another position out of the community and the transition was in the summer of 2021. The assistance, acceptance, and patience of the school district was welcome and appreciated.

We made solid efforts to continue our success in our curriculum and in our community. Our enrollment this year led to an all time high in 47 students and we added 1.5 FTE teaching positions this year. Our PTO also had a setback when our longtime president moved out of the country, but we had a good group of parents pick up the mantle and provided opportunities for families to come together and enjoy the school year. Our Board of Directors also had some major transition when the President resigned as well as 3 members of the board during the school year. We were able to quickly appoint a new president with vast experience both in the professional world and being on other educational boards. We also appointed a new board member in the month of January 2022 This ensured a positive transition for the 2021-22 school year.

We did suffer some tragedy in our Cannon Beach Academy family. One of our families was in a fatal car accident in the winter of 2021. Kobe Braxton, first grade, and his father Micheal Braxton were killed in a car accident. The Seaside school District was extraordinarily supportive as they offered their counselor to our students for a week and sent a tree to our school to plant in honor of the Braxton Family which we have done on the north side of campus.

Some highlights of the school year. Before school began we had staff, parents and students come together and revitalize the bark chips in our playground. We began our 1st annual Trunk R Treat in our parking lot presented by our PTO. Our school participated in the Lamp Lighting Ceremony in Cannon Beach. We participated in the American Heart Association's challenge for our second year. We brought in the Book Blast fundraiser that provides books to our students. We were able to raise enough money so that every child received 10 books to take home and our teachers received classroom sets and extra money to enrich their classrooms. We planted several trees in participation with the 12 days of Earth Day. We enjoyed an end of the year "field trip" to Haystack Rock with the Haystack Awareness Program. We also participated in the 4th of July parade that takes place in Cannon Beach to continue that tradition.

All in all we had an amazing school year and have enjoyed being a part of the Seaside School District.

Thank you,

Ryan Hull

Calendar

August

Teacher Training

September

First Day of School

October

Halloween Trunk R' Treat

November

Open House

December

Lamplighting Ceremony

Winter Program in our Parking Lot

Pictures with Santa

January

School Board Recognition Month

National School Choice Week

February

100th day of school

AMA Healthy Heart Fundraiser

March

Dr. Seuss' Birthday

BookBlast Fundraiser

April

Puffin Welcome Back Celebration

Tree Planting

Easter Potluck/Egg Hunt

Open House

Kindergarten Connect

May

Teacher Appreciation Week

June

Last day of school for students

July

Cannon Beach 4th of July Parade

Staff Training in Eugene with NIFDI

2 STUDENT INFORMATION

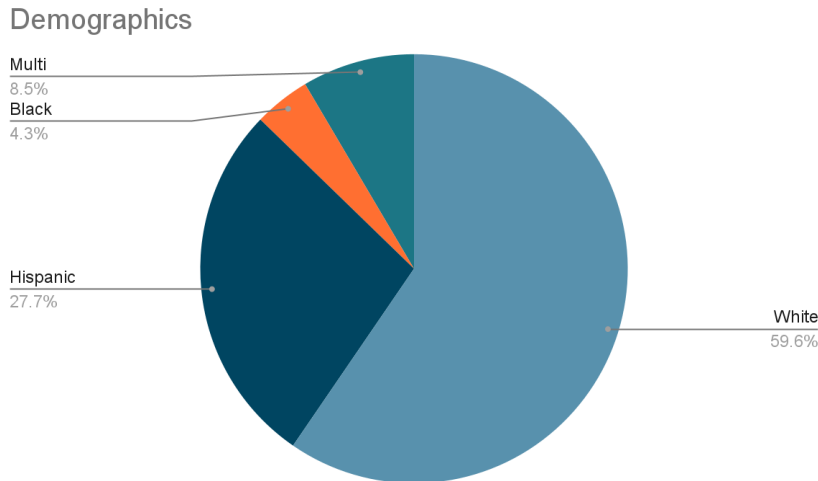
Enrollment

2021-22 School Year	K	1st	2nd	3rd	4th	5th	Total
Enrollment September 2021	15	10	8	6	6	2	47
Returning students from previous year	0	10	6	4	6	2	28
Percentage of students returning from previous year	0	100	75	67	100	100	60%
Withdrawals during 2021-22 school year	2	1	2	0	1	0	6
New enrollments during 2021-2022 school year	15	2	2	1	1	0	21
Final enrollment June 2022	13	11	8	7	6	2	47

Waitlist - We had a very small waitlist in kindergarten over the summer but were able to get all students from the list on our roster..

Student Demographics Reported as of June 2022

Number of students: 47



Enrollment- Percentage of students who self-disclose as economically disadvantaged: 21/47 44.6%

Attendance Data

Days enrolled: 7849

Days present: 7140

Attendance rate: 91%

Student Discipline Data

During the 2021- 22 school year, there were 11 student incidents. 9 were minor physical altercations (pushing, shoving, etc), 1 was harassment and 1 was bullying. 4 females were involved and 7 males were involved in these incidents. 3 were kindergarten students, 1 was a first grade student, 1 was a second grade student, 2 were third grade students, 3 were fourth grade students and 1 was a 5th grade student involved in the incidents.

Student Clubs

Battle of the Books Club - Students in 3rd grade to 5th grade met every Monday after school from 3:15 to 4:30. to participate in The Battle of the Books. We did invite some 2nd graders who were interested in reading the books and helping with preparing the students who could compete. The competition was held in March of 2022. We participated virtually this year. This served 9 of our students.

Dungeons & Dragons Club - Students in 3rd grade to 5th grade met every Tuesday after school from 3:15 to 4:30 to engage in a campaign of Dungeons & Dragons. This

year we began our journey at The prestigious Champion Builders Academia (or CBA for short) to build the young heroes of tomorrow. This activity builds on STEM, Mathematics, social emotional skills, note-taking, and roll-playing. This club met for the entire school year. This club served 10 students.

Student Achievement Measures

Statewide Assessments

The Smarter Balanced Assessment was given to students in grade 3, 4, and 5. Sample size is too small to be analyzed by the Oregon Department of Education with regards to comparisons to the Seaside School District, or disaggregated data. The charts and graphs below report the results of the English Language Arts (ELA) and Math tests.

ELA

2020-21 School Year	3rd	4th	5th	Total Students
Number of students tested	6	6	2	14
Level 1	1 - 17%	2 - 33%	0	3 - 21%
Level 2	3 - 50%	2 - 33%	1 - 50%	6 - 43%
Level 3	1 - 17%	1 - 17%	1 - 50%	3 - 21%
Level 4	1 - 17%	1 - 17%	0	2 - 14%

Math

2020-21 School Year	3rd	4th	5th	Total Students
Number of students tested	6	6	2	14
Level 1	4 - 66%	3 - 50%	1 - 50%	8 - 58%
Level 2	0	2 - 33%	1 - 50%	3 - 21%
Level 3	2 - 33%	1 - 17%	0	3 - 21%
Level 4	0	0	0	0

Analysis:

For ELA, five of the fourteen students who were assessed met or exceeded the achievement standard (level 3 or higher 36%), and six nearly met the standard (43%). We will analyze which specific areas of the ELA test students scored lower and make sure to address those areas in our teaching.

For math, Three of our fourteen students met the achievement standard (level 3 or higher 21%). three students nearly met (21%) and eight students did not meet the standard. We will be analyzing which specific areas of the math test students scored lower, and make sure to address those areas in our teaching.

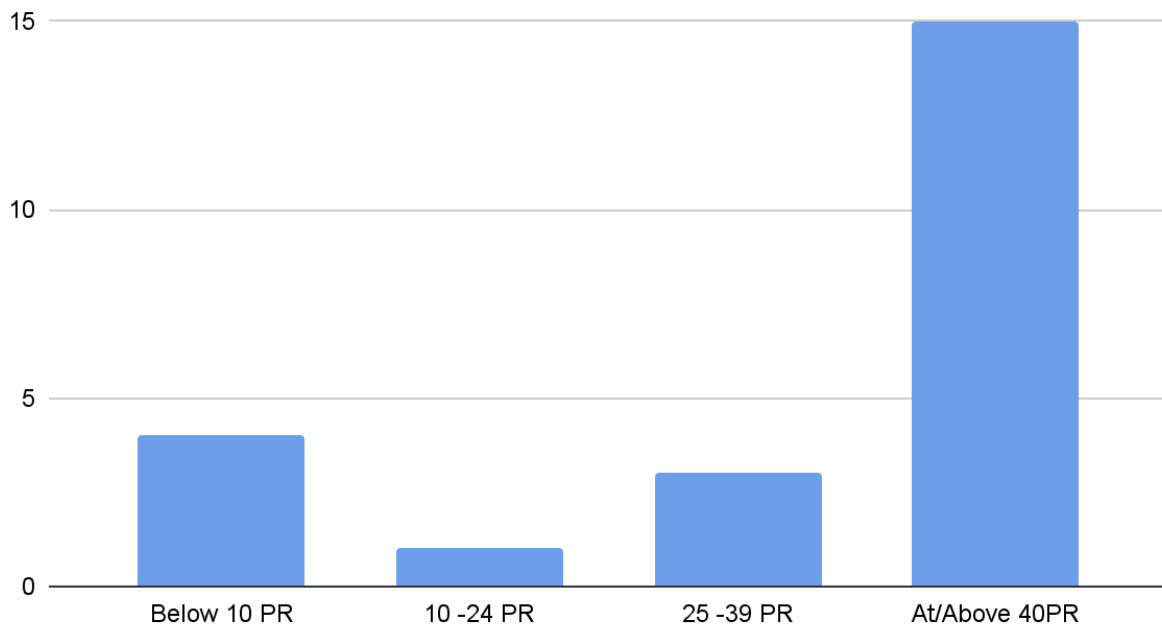
Student Achievement- STAR 360 District Wide Assessments

The Cannon Beach Academy administers the STAR tests at least three times per year to measure growth. The following charts below show the number of students at each percentile rank, who participated in the testing. Also noted is the overall percentile rank for each test. This data reflects the end of the year scores.

Star Early Literacy is a customized reading test for students to take on a computer. The test is designed for students in grades pre-K through 3 (beginning readers who do not yet read independently or need early literacy skills assessed).

STAR Early Literacy Overall Median Percentile Rank: 55, grades K-2. 23 students total.

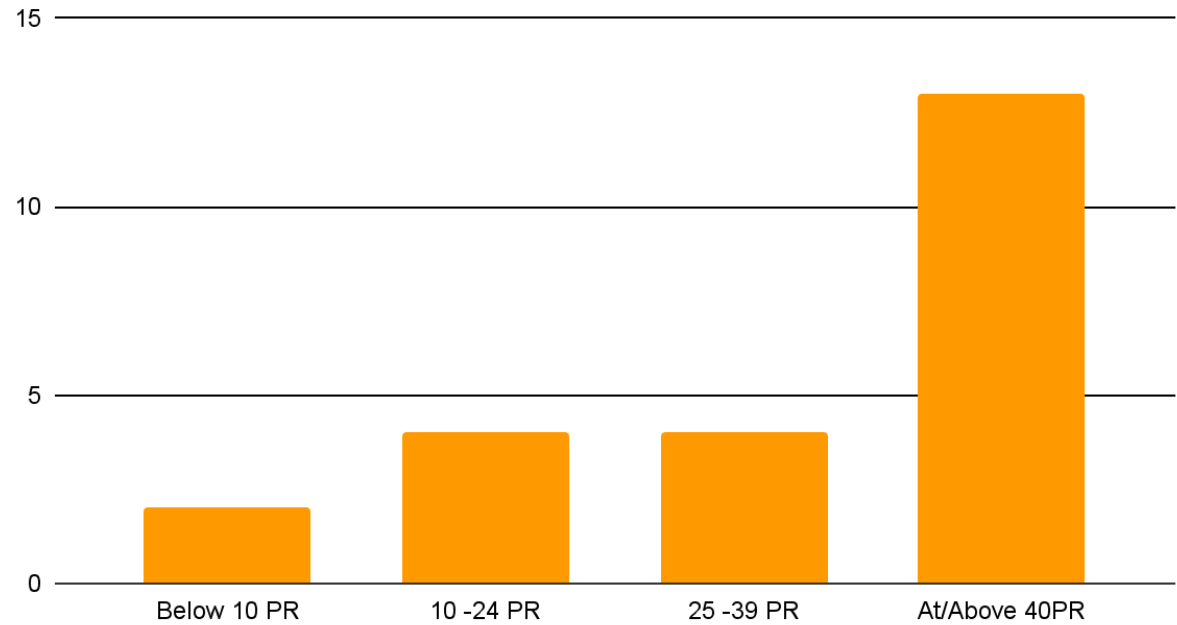
STAR Early Literacy (K-2)



Star Reading is a customized reading test for students to take on a computer. The test is designed for students in grades 1 through 12).

STAR Reading Overall Median Percentile Rank: 54, grades 1-5. 23 students total.

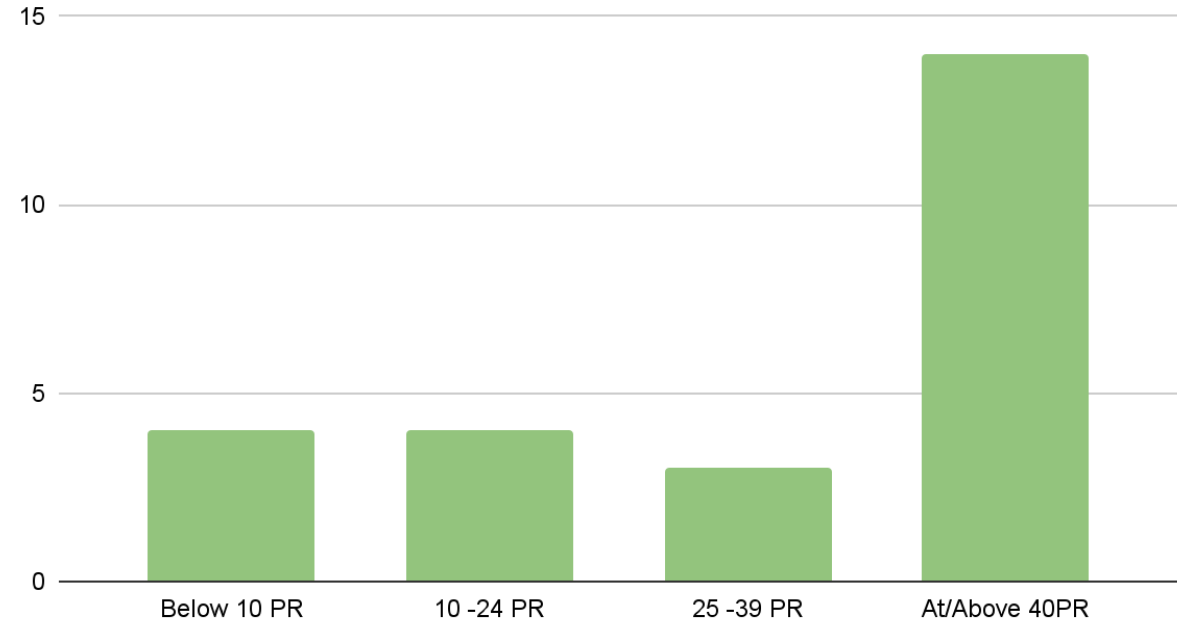
STAR Reading (1-5)



Star Math is a customized math test for students to take on a computer. The test is designed for students in grades 1 through 12.

STAR Math Overall Median Percentile Rank: 41, grades K-5. 25 Students total

STAR Math (1--5)



The 2021-22 school year was the fourth year using this assessment. Growth rates are reported from Fall 2021 to Spring 2022. The projected Student Growth Percentile (SGP) is 50.

Early Literacy SGP: Fall 36 Spring 44

Reading SGP: Fall 51 Spring 57

Math SGP: Fall 36 Spring 50

Analysis:

We need to direct additional attention on the students who fall below the 25th percentile. STAR allows teachers to print reports that determine students academic strengths and areas of need. For individual students who fall below the 25th percentile, teachers can target areas of need during independent work time or small group instruction.

Additionally, we need to provide extra attention to those students who are in first or second grade but still haven't mastered the early literacy skills to take the standard reading test. These students are already in an extra reading class, and are in a reading class that is below their grade level in order to boost confidence and knowledge.

Overall, our growth rates for reading and math are at or above expected growth. Early literacy is below expected growth. We will need to focus on our struggling readers to provide extra support, as mentioned in the overall analysis.

Students in the English Language Development (ELD) Program at Cannon Beach Academy

Total number of students enrolled in school: 47

Number of students enrolled in ELD: 9

Percentage of students enrolled in ELD: 19%

Number of students enrolled in ELD and Special Education: 0

Number of students who exited the ELD program and are being monitored: 0

ELD Placement data from ELPA test results June 2022

2021-22 School Year	K	1st	2nd	3rd	4th	5th	Total
Number of students in the ELD program	2	1	2	2	1	1	9
Emergent	0	0	0	0	0	0	0
Progressing	2	1	2	1	1	1	8
Proficient	0	0	0	1	0	0	1
Monitoring	0	0	0	0	0	0	0

Analysis:

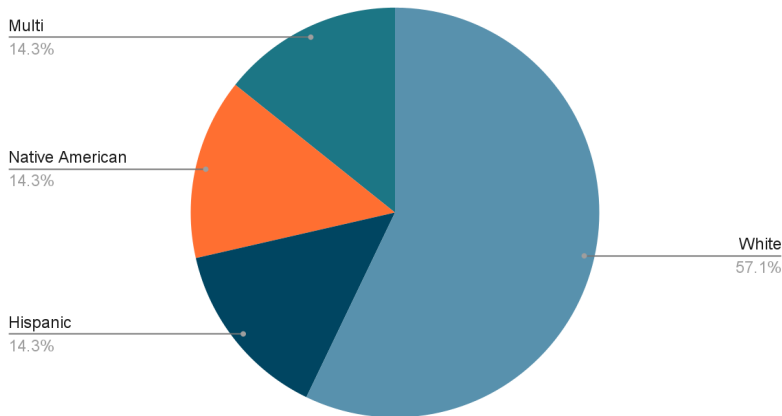
We need to work closely with the students to develop skills to help them be more proficient.

3 PERSONNEL

Employees

- Ryan Hull - Director, ½ Day Kindergarten Teacher, cook
- Hallie Edgmon - ½ Day Kindergarten Teacher, Small Groups Teacher
- Dawn Rhoads-Jay - 1st Grade/2nd Grade Teacher, Music Teacher
- Leticia Campos - Spanish Teacher, ELD Teacher, Technology Teacher
Small Groups Teacher
- MaryEllen Kiffe - 3rd Grade/4th Grade/5th Grade Teacher, Art Teacher
- Karen Maria Barker - SPED Teacher
- Jennifer Stangland - Business Manager

Staff Demographics



Recruitment

We used Indeed as our primary recruiting site. We also used word of mouth in the community and posted jobs at the Cannon Beach Chamber of Commerce on their website.

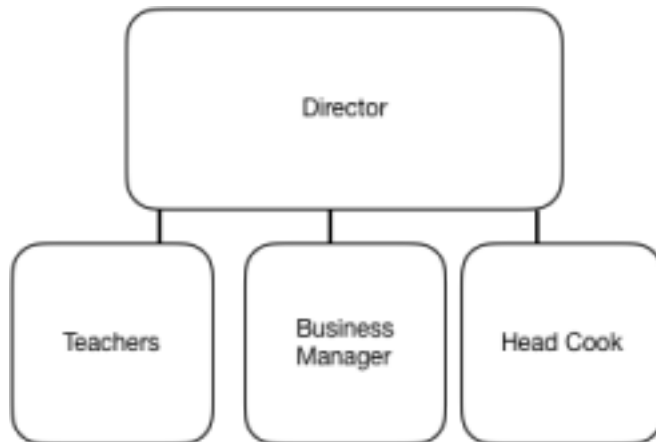
Staff retention has been high. With the sudden loss of our previous administrator we filled the position with an existing teacher on staff in an interim position until January of 2022 when the board removed the interim status. We hired our existing SPED teacher to fill the position of 3rd grade/4th grade/5th grade teacher, then hired a new teacher for the SPED teacher position. We also created a new position this year. The ½ day Kindergarten and small groups teacher was added to our staff.

Hiring Procedure

- Post position
- Review candidates' resumes and letters of recommendation
- Conduct phone interview

Schedule in-person interview
Call references on applicable candidates
Offer position
Complete background check/fingerprinting as necessary
Complete HR paperwork

Organizational Chart



Professional Development

During the summer, teachers attend a week-long conference at the National Institute for Direct Instruction (NIFDI). This conference provides training on curriculum for new staff, or for staff who are teaching new material as well as providing support for experienced teachers in our program. The conference also teaches staff how to analyze data for the Direct Instruction (DI) Program.

Teaching staff meet weekly for one hour for professional development. This allows staff to develop the knowledge and skills they need to address students' learning challenges. Additionally, the professional development time is used to improve instruction. During the 2021-22 school year, teaching staff participated in a book study using the book The Growth Mindset by Anne Brock and Heather Hundley. Once a Month, teachers met to discuss the strategies and techniques outlined in the text. They were to adapt the tools in the text to apply in their own classroom teaching and situations. Discussion groups were held to talk about challenging situations in the classroom, which allowed for collaboration on how to address such issues.

Staff also met on a monthly basis to discuss progress in the DI program. These meetings evaluated weekly lesson progress, student test analysis, and any regrouping that may be needed.

Throughout the year during inservice days, teachers were given additional training on the referral process for Special Education, ELD, training on the Smarter Balance and ELPA 21.

Evaluation Schedule/plan/tool

Goal setting and Observation cycle:

https://drive.google.com/file/d/1FOniQb5tI3Pzw8PYV4EUKZITEoL6LUBF/view?usp=share_link

PD Growth Plan:

https://drive.google.com/file/d/1fdNVW2NIC3qvfGVCSI19x2m3Tkj7hiU_/view?usp=share_link

Professional Growth Log:

https://drive.google.com/file/d/1tkmC7_MkkZctYZuP5HLqdDRydtKlGfEj/view?usp=share_link

Pre-Observation conference:

https://drive.google.com/file/d/1nluoJeAlhsK0fSEu-akFEmwVbch8tvp3/view?usp=share_link

Post Observation Conference:

https://drive.google.com/file/d/1IDUhPvLsHOCbjoEgWfqE_kf3TvycptIR/view?usp=share_link

End of Year Reflection Tool:

https://drive.google.com/file/d/1dm2r1EK_iUM6ozP1n_J62SbsGqNQ93Ak/view?usp=share_link

Employee Handbook

This is available online at:

https://drive.google.com/file/d/1VxkTaAtp06j9qmXaejG90MsqWUGZu81_/view?usp=share_link

Board of Directors as of June 2022

Members (terms are current and do not have an end date)

Phillip Vincent, President

Sean Radway, Vice President

Alec Holser, Secretary

Barb Knop, Treasurer

Minutes Are posted on our website:

<https://www.thecannonbeachacademy.org/our-board>

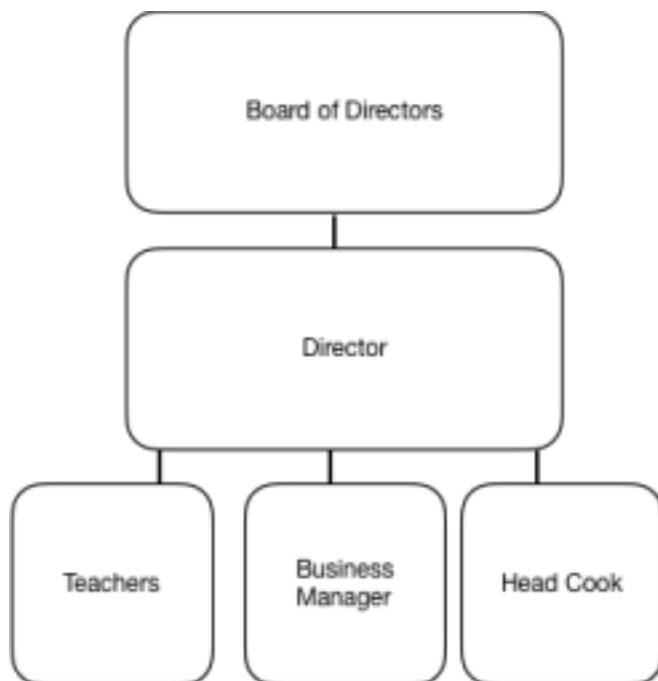
Policies Are posted on our website:

<https://www.thecannonbeachacademy.org/our-board>

Financials Are posted on our website:

<https://www.thecannonbeachacademy.org/our-board>

Organizational chart



Professional Development

None at this time. Next year some members will participate in the Oregon School Board Association's annual conference.

Strategic Plan

A strategic plan is underway to get our numbers back to 7 board members.

Calendar

The board met monthly on the third Wednesday of each month at 6:00pm. The board meetings were held virtually, however there was always an option to meet at the school.

4 CURRICULUM/PROGRAMS

Education Program Description

The Cannon Beach Academy consists of three classrooms of which two are blended classrooms. Mr. Hull was the core teacher for Kindergarten, Mrs. Jay was the 1st grade/2nd grade core teacher and Mrs. Kiffe was the 3rd grade/4th grade/5th grade core teacher. The Kindergarten has a maximum of 15 students and the other blended classrooms can have a maximum of 25 students for a total of 65 students at full capacity.

For core academics (reading, language and math), Mrs. Campos, Mrs. Edgmon, and Mrs. Barker taught small groups alongside Mr. Hull, Mrs. Jay and Mrs. Kiffe for a potential total of six small groups that can teach at the same time. This allows students who need instruction above or below his/her grade level to "walk to reading" or "walk to

math". It also gives us the ability to give instruction at multiple skill levels with more minutes of focus per student.

Mrs. Campos is our ELD teacher and Spanish teacher. She has students throughout her day.

Direct Instruction is used for reading, academic language and math. Core Knowledge is used for Social Studies. Step Up to Writing is used for our 3rd-5th grade writing. Mystery Science is used for Science. National Geographic REACH is used for the ELD program. Rockalingua and VHL central are used for Spanish. Teacher-created plans and materials were used for Art and PE. PE occurs daily for 30 minutes per day. Music Play is used for Music. Great Body Shop and 2nd Step is used for Health.

5 Parent/Community Engagement

Parent Satisfaction - Survey

The Parent satisfaction survey for the 2021-22 school year was done on ClassDojo. Unfortunately the data was archived at the end of the year and cannot be retrieved. The Parent Survey below was done via SurveyMonkey in the winter of 2023 in English and Spanish.

My child is safe while attending school.

Agree 100%

Disagree 0%

The school values my opinions and concerns regarding school and student issues.

Agree 84%

Disagree 16%

I am provided with meaningful opportunities to contribute to the school.

Agree 79%

Disagree 21%

Why did you enroll your student at the Cannon Beach Academy? Check all that apply.

Small class size 73%

Close to work/home 7%

Direct Instruction Curriculum 10%

Spanish Language instruction 10%

I would recommend the Cannon Beach Academy to others.

Agree 97%

Disagree 3%

Overall, I am satisfied with my experience with the Cannon Beach Academy.

Agree 91%

Disagree 9%

Analysis and Plan of Action:

Our families have described great satisfaction with our school. There is a high level of communication with families on a weekly basis through ClassDojo and we will continue with the current plan. Our plan is to encourage families to share their experiences with others in hopes of recruiting new students and supporters of the school. We will also work toward a consistent newsletter to keep our parents informed.

Continuous Improvement

Goals / Focus Areas

Enrollment and retainment

Staff retainment

Staff to represent our student population

Board recruitment and retainment

Board Membership to represent our student population

PTO Membership to represent our student population

Strategic Planning

Sustainability

Fiscal Planning

Parent Engagement

The Cannon Beach Academy continues to invite family members into the classroom to volunteer. COVID has limited Participation. There has also been low participation due to a variety of circumstances, primarily dual working parents, but there is a dedicated crew of family members who are strong advocates and supporters of the school. We had our 1st annual bark chip party to restore our playground with bark chips. We had over 10 families participate.

Our Parent Teacher Organization (PTO) meets monthly to discuss fundraising and enrichment activities for the students. Throughout the year, the PTO hosts parties, for Halloween (Trunk R' Treat) and Easter (Easter Egg Hunt), to bring families to the school. As the school continues to grow, the goal is to create a stronger, more robust organization.

The school also hosts annual events such as the Winter Program at Coster Theater or in the case of this year our parking lot and Cannon Beach Lamplighting ceremonies, which have also been extremely successful.

Community/Business Partners

12 Days of Earth Day
Adamson Bros Jiu Jitsu
American Heart Association
Bill's Tavern
Book Blast
Cannon Beach Arts Association
Cannon Beach Bakery
Cannon Beach Fitness
Cannon Beach Hardware
Castaways Restaurant
City of Cannon Beach
City of Cannon Beach Community Grant
Coaster Construction
Coaster Theater
Columbia Bank
Fresh Foods
Haystack Rock Awareness Program
Mo's Cannon Beach
Oregon Department of Education
Pig and Pancake
Pizza a Fetta
Pelican Brewery
Public Coast Brewery
Seaside School District
Sleepy Monk Coffee
Starbase Camp Rilea
US Bank
US Foods

Plan(s) for parent engagement

The academy plans to continue to reach out to families for participation in events and school volunteering. Word of mouth has been the most successful method in reaching new families, so it is imperative to encourage our current family members to share their experiences and success stories.

6 Facilities

The Cannon Beach Academy currently leases the building from the City of Cannon Beach. The building is approximately 2000 square feet and was previously used by the former Children's Center preschool and daycare. The building was vacant for approximately one year before we moved in. Improvements include: a fire suppression system, roofing and gutter repairs, a playground, as well as routine upkeep to landscaping, parking lot and general building.

Due to the school's proximity to the beach, teachers take advantage of PE time to walk to the beach if the weather and surf permit.

The school is approximately 50 feet above sea level. The evacuation route takes students to the West end of the property, across Highway 101, and into the neighboring housing development to the rally point, which is approximately 100 feet above sea level.

Please see the school emergency plan at the link below.

https://drive.google.com/file/d/1s6zYX0Zwbo3PyJ-tfy4pzc3A_lhYVIH7/view?usp=share_link

Permits

There are currently no permits issued or requested.

Insurance

The Cannon Beach Academy is insured by PACE, via WSC Insurance. Below is a copy of the policy.

https://drive.google.com/file/d/1biqM3Vm2nRdRFBqmp0vjHruFZOol2mG/view?usp=share_link

Capital Improvement

None at this time.

7 Financial Management

Audit

The exit conference memo from Pauly Rogers, and Co., P.C. is below.

https://drive.google.com/file/d/1ZyvgJGt2IKXA0nbnfeKuXvQa01rb58kJ/view?usp=share_link

Financial Report

The MD&A is on the following pages.

THE CANNON BEACH ACADEMY
CLATSOP COUNTY, OREGON
MANAGEMENT'S DISCUSSAND & ANALSYS (MD&A)

INTRODUCTION

As management of The Cannon Beach Academy, Cannon Beach, Oregon, we offer readers this narrative overview and analysis of the financial activities of The Academy for the fiscal year ended June 30, 2022. It should be read in conjunction with The Academy's financial statements, which follow this section.

Our charter school opened in 2017. We are a tuition free, public charter school under the Seaside School District. We receive 80% of the average daily membership/weighted (ADMw) state allotment per child with Seaside School District keeping the other 20%. In addition, we utilize grants, pledges and community fundraisers.

FINANCIAL HIGHLIGHTS

The Cannon Beach Elementary School closed in 2013. There is no other grade school in our town and we wanted this school to be accessible for all, regardless of income. Being tuition free is a unique feature of our charter school. We also provide free breakfast and lunch to all students, regardless of income.

OVERVIEW OF THE FINANCIAL STATEMENTS

This discussion and analysis is intended to serve as an introduction to The Cannon Beach Academy's basic financial statements. The Academy's basic financial statements are comprised of three components: (1) government-wide financial statements, (2) fund financial statements, and (3) notes to the basic financial statements. This report also contains other information in addition to the basic financial statements themselves.

Government-Wide Financial Statements

The government-wide financial statements are designed to provide readers with a broad overview of The Academy's finances in a manner similar to a private-sector business.

The statement of net position presents information on all of The Academy's assets and liabilities with the difference between the two reported as net position. Over time, increases or decreases in net position may serve as a useful indicator of whether the financial position of The Academy is improving or deteriorating.

The statement of activities presents information showing how The Academy's net position changed during the most recent fiscal year. All changes in net position are reported as soon as the underlying event giving rise to the change occurs, regardless of the timing of related cash flows. Thus, revenues and expenses are reported in this statement for some items that will only result in cash flows in future fiscal periods.

The government-wide financial statements can be found on pages 1 through 2 of this report.

Fund Financial Statements

The fund financial statements are designed to demonstrate compliance with finance-related legal requirements overseeing the use of fund accounting. A fund is a grouping of related accounts that is used to maintain control over resources that have been segregated for specific activities and objectives. The only fund of The Academy is a governmental fund.

THE CANNON BEACH ACADEMY
CLATSOP COUNTY, OREGON
MANAGEMENT'S DISCUSSAND & ANALSYS (MD&A)

Governmental Funds

Governmental funds are used to account for essentially the same functions reported as governmental activities in the government-wide financial statements; however, unlike the government-wide financial statements, governmental fund financial statements focus on near term inflows and outflows of available resources, as well as on balances of available resources at the end of the fiscal year. Such information may be useful in evaluating The Academy's near term financing requirements.

Because the focus of governmental funds is narrower than that of the government-wide financial statements, it is useful to compare the information presented for governmental funds with similar information presented for governmental activities in the government-wide financial statements. By doing so, readers may better understand the long-term impact of The Academy's near term financing decisions. Both the governmental fund balance sheet and the governmental fund statement of receipts, disbursements, and changes in fund balance provide a reconciliation to facilitate this comparison between governmental funds and governmental activities.

The Academy maintains one governmental fund. Information is presented in the governmental fund balance sheet and in the governmental fund statement of receipts, disbursements, and changes in fund balance for the General Fund, which is considered to be a major governmental fund.

Although not required by law, The Academy prepares an annual budget. Budgetary comparison data is presented in this report solely for informational purposes.

The basic governmental fund financial statements can be found on pages 3 through 6 of this report.

Notes to the Basic Financial Statements

The notes to the basic financial statements provide additional information that is essential to a full understanding of the financial data provided in the government-wide and fund financial statements. The notes to the basic financial statements can be found on pages 7 through 24 of this report.

Supplementary Information

Budgetary comparison information for the General Fund is presented on page 27 of this report.

GOVERNMENT-WIDE FINANCIAL ANALYSIS

As noted earlier, net position may serve over time as a useful indicator of The Academy's financial position. At June 30, 2022, The Academy's assets exceed liabilities by \$333,314.

A portion of The Academy's net position reflects its investment in capital assets (e.g., land, buildings, and equipment). The Academy uses these capital assets to provide services; consequently, these assets are not available for future spending.

THE CANNON BEACH ACADEMY
CLATSOP COUNTY, OREGON
MANAGEMENT'S DISCUSSAND & ANALSYS (MD&A)

School's Net Position

Condensed statement of net position information is shown below.

Statements of Net Position

	<u>6/30/2022</u>	<u>6/30/2021</u>	<u>\$Change</u>	<u>%Change</u>
Cash	263,574	324,188	-60,614	-18.70%
Capital Assets, net	74,810	67,608	7,202	10.65%
Total Assets	<u>338,384</u>	<u>391,796</u>	<u>-53,412</u>	<u>-13.63%</u>
Payroll Liabilities	5,070	72	4,998	6941.67%
Total Liabilities	<u>5,070</u>	<u>72</u>	<u>4,998</u>	<u>6941.67%</u>
Net Position				
Invested in capital assets, net	74,810	67,608	7,202	10.65%
Restricted	90,959	175,276	-84,317	-48.11%
Unrestricted	167,545	148,840	18,705	12.57%
Total Net Position - Modified Cash Basis	<u><u>333,314</u></u>	<u><u>391,724</u></u>	<u><u>-58,410</u></u>	<u><u>-14.91%</u></u>

Statements of Activities

	<u>6/30/2022</u>	<u>6/30/2021</u>	<u>Change</u>	<u>Change</u>
Grants and Contributions	98,238	126,810	-28,572	-22.53%
State Sources	340,878	341,530	-652	-0.19%
Payment Protection Plan Proceeds	0	68,740	-68,740	-100.00%
Other Income	437	1,876	-1,439	-76.71%
Interest and Investment Earnings	28	36	-8	-22.22%
Total Revenues	<u>439,581</u>	<u>538,992</u>	<u>-99,411</u>	<u>-18.44%</u>
Instruction Expense	334,694	332,176	2,518	0.76%
Support Expense	92,895	107,754	-14,859	-13.79%
Enterprise and Community Expense	21,600	7,773	13,827	177.88%
Facilities Acquisition and Construction	48,802	10,532	38,270	363.37%
Debt Service	0	6,000	-6,000	-100.00%
Total Expense	<u>497,991</u>	<u>464,235</u>	<u>33,756</u>	<u>7.27%</u>
Change in Net Position	<u>-58,410</u>	<u>74,757</u>	<u>-133,167</u>	<u>-178.13%</u>
Beginning Net Position - Modified Cash Basis	<u>391,724</u>	<u>316,967</u>	<u>74,757</u>	<u>23.59%</u>
Ending Net Position - Modified Cash Basis	<u><u>333,314</u></u>	<u><u>391,724</u></u>	<u><u>-58,410</u></u>	<u><u>-14.91%</u></u>

School's Changes in Net Position The condensed statement of activities information shown above explains changes in net position.

THE CANNON BEACH ACADEMY
CLATSOP COUNTY, OREGON
MANAGEMENT'S DISCUSSAND & ANALSYS (MD&A)

FINANCIAL ANALYSIS OF THE ACADEMY'S FUND

As noted earlier, The Academy uses fund accounting to ensure and demonstrate compliance with finance-related legal requirements.

Governmental Fund

The focus of The Academy's governmental fund is to provide information on near-term inflows, outflows, and balances of expendable resources. Such information is useful in assessing The Academy's financing requirements. In particular, unassigned fund balance may serve as a useful measurement of The Academy's net resources available for spending at the end of the fiscal year.

One challenge is that we are unable to predict what the per-student amount that we receive from the district will be until just days before our funding comes through. It is also a challenge to try to predict how many students will be enrolled in our school until the first day of school. Enrollment also fluctuates throughout the year.

CAPITAL ASSETS

We have minimal capital assets at this time. Our large purchases this year included leasehold expenses.

KEY ECONOMIC FACTORS AND BUDGET INFORMATION FOR THE FUTURE

Enrollment at The Cannon Beach Academy is the biggest factor that could impact the ability to operate in the future. If we do not meet our enrollment goal, we have to adjust our budget, and it will greatly impact our ability to hire additional staff. This will also impact how effectively we are able to deliver our method of instruction since our teacher-to-student ratio is higher than traditional methods of instruction. Additionally, with COVID-19 impacting the world, our traditional fundraising efforts were more challenging to host at various times.

REQUESTS FOR INFORMATION

This financial report is designed to provide a general overview of The Academy's finances for all those with an interest. Questions concerning any of the information provided in this report or requests for additional information should be directed to the following: Ryan Hull or Barb Knop at (503) 436-4463.

Federal Funds

ADMr = Average Daily Membership (resident)

Students Eligible for Special Education = 1.0 additional weight with a cap
ESL = 0.5 additional weight for qualifying program

Poverty = 0.25 additional weight

Pregnant and Parenting = 1.0 additional weight for qualifying program
Remote Small Elementary Correction

Small High School Correction

Neglected/Delinquent/Foster students = 0.25 additional weight

Union High School = 1.2 weights per ADMr

Elementary School Districts = 0.9 weights per ADMr

8 Local School District

Connections / Contacts

Susan Penrod, Ed.D., Superintendent (503)738-5591

Toni Vandershule, Business Manager (503)738-5591

Professional Development via the Seaside School District

Teachers at the Cannon Beach Academy participate in the following professional development provided by the school district:

CPR/First Aid

Epinephrine Administration

STAR assessment

Smarter Balance Statewide assessment

ELPA21 Statewide assessment